

35 YILI AŞKIN TECRÜBE

İSKELE
BORU VE BAĞLANTI
PARÇALARI



KSC DİŞ TİCARET MADENCİLİK LTD. ŞTİ.



Maviğöl Mah. Koca Yusuf Cad. A/Blok No: 118 / 13 Arnavutköy / İSTANBUL



+90 (212) 238 61 57 | +90 (532) 271 23 63 | +90 (555) 145 19 65 | +90 533 248 73 05



info@kscmining.com | levent@kscmining.com | ibrahim@kscmining.com



www.kscmining.com | www.kscstone.com

KEE CLAMPS AND FITTINGS
TECHNICAL CATALOGUE





Her türlü tesisat montajı ve projelendirme işlerinde, eğitimli ve uzman kadrosu ile yıllardan beri başarılı bir şekilde hizmet veren firmamız; inşaat, altyapı, yer üstü ve yer altı madencilik sektöründe kullanılan makine ve ekipmanlarının sürekli olarak çeşitliliğini artırarak, yaptığı kaliteli ve özel imalatlarla birçok firmanın çözüm ortağı olmuştur.



Yangınla mücadele sektöründeki tecrübesini, madencilik sektöründe de başarılı bir şekilde gösteren firmamız, 2018 yılında temellerini attığı "KSC Mining" ile sektöre hızlı bir giriş yapmıştır. Bu kısa süre içerisinde, büyük ölçekteki çeşitli "Yığın İçi" (heap leaching) projelerinde kullanılan boruların tedarikinin yanı sıra, saha içi uygulamalarını ve denetimlerini de sürdürmekteyiz.

Tedarikçisi olduğumuz ürün grupları:

Paslanmaz Çelik, CPVC, PVC Borular
HDPE Boru/Fittingsler
N12 Perfore ve Koruge Borular
Geomembranlar
HDPE ve PVC Drenaj Boruları

Yağmur suyu Toplama Sistemleri
Altyapı Sel Taşkın Sularını Önleme Sistemleri
Patlayıcı, Patlama Ürün ve Ekipmanları
İşgüvenliği Malzeme ve Ekipmanları,
El Aletleri ve Hırdavat Malzemeleri



Malzeme

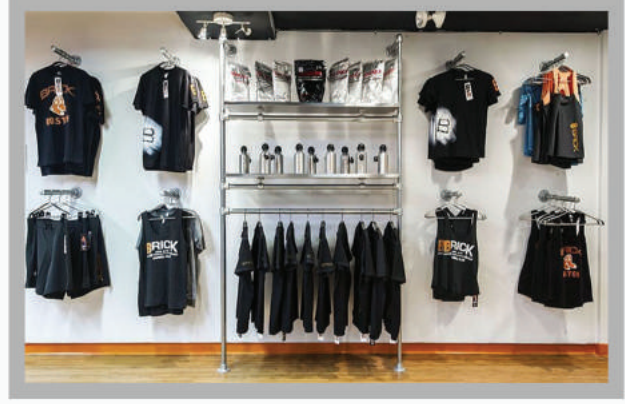
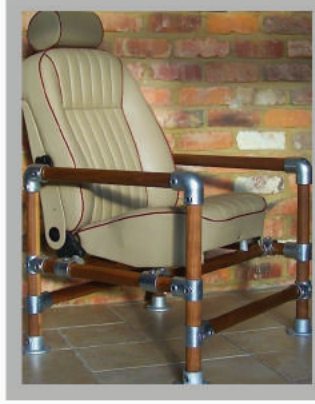
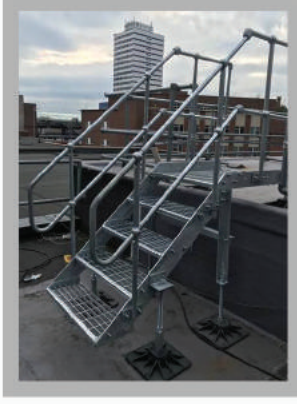
Mech Marka PEA Kelepçeleri, iyi mekanik dayanım ve yeterli uzama karakterleri için geçerli olan ASTM A197'ye uygun dövülebilir demir kullanılarak tasarlanmıştır. Kelepçelerin yüzey işlemi, sıcak daldırma galvanizli olup, ASTM A153'ün paslanmaya ve korozyona karşı özelliklerini karşılamaktadır.

Boyut

Altı farklı boyut aşağıda belirtilmiştir.

BORU EBAT SINIFI	NOMİNAL DELİK ÇAPI	DIŞ ÇAP
T	1/2"	21.3mm
A	3/4"	26.9mm
B	1"	33.7mm
C	1-1/4"	42.4mm
D	1-1/2"	48.3mm
E	2"	60.3mm

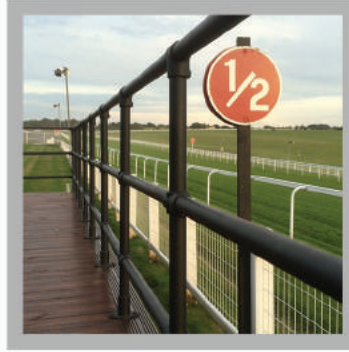
* Ürün kodunun yanı sıra, boyutlarının belirtilmesi, sizler ile firmamız arasındaki iletişimi kolaylaştıracak olup ürünlerimiz kolaylıkla tanımlanabilecektir.



Uygulamalar

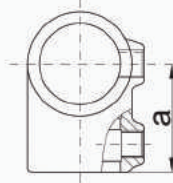
Firmamızın sağlamış olduğu Boru Kelepçeleri, el korkuluk emniyetinde korkuluk durumlarında yaygın olarak kullanılmaktadır. Sistem, standart boyutlardaki yapısal çelik boruyu, akla gelebilecek her türlü konfigürasyona güvenli bir şekilde bağlar.

- ✓ Korkuluk
- ✓ Çit ve Güvenlik Duvarları
- ✓ Çocuk Oyun Parkları
- ✓ Sağımhaneler
- ✓ Demiryolu Korkulukları
- ✓ Konfeksiyon Rafları
- ✓ Market Tezgahları
- ✓ Spor Uygulama Ağları
- ✓ Otoyol Kontrol Tesisleri
- ✓ Yol Levhaları
- ✓ Çatı Üstü Düşme Önleme Sistemleri
- ✓ Ağır Hizmet İş İstasyonları
- ✓ Güvenlik Korkulukları
- ✓ Rekreasyon Alanları



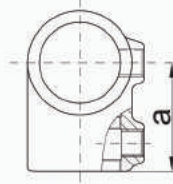
- ✓ Perakende Teşhir ve Mağaza Donanımı
- ✓ Tarımsal Muhafazalar
- ✓ Seralar
- ✓ Sergi Standları ve Ekranları
- ✓ Geçici Binalar
- ✓ Tekerlekli Sandalye Erişim Rampaları
- ✓ Tema Parkı Sıra Yönetimi
- ✓ Tavan Koruyucuları
- ✓ Genel Tabela
- ✓ Erişim Platformları ve Asma Katlar
- ✓ Su Arıtma Tesisleri
- ✓ Merdiven Korkulukları
- ✓ Ticari Billboard Çerçeveleri
- ✓ ve daha fazlası...

101

Kısa Tee
Short Tee

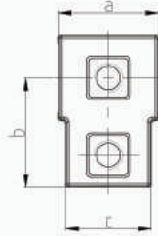
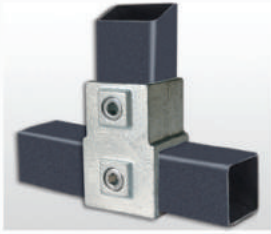
TİP	BORU ÇAPİ (mm)	EBATLAR (mm.)			
		a	b	c	d
S	17.2	30			
T	21.3	35			
A	26.9	41			
B	33.7	46			
C	42.4	60			
D	48.3	68			
E	60.3	84			

101

Kısa Redüksiyon Tee
Reducing Short Tee

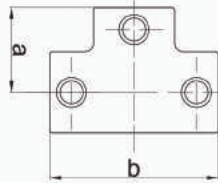
TİP	BORU ÇAPİ (mm)	EBATLAR (mm.)			
		a	b	c	d
BA	33.7/26.9	46			
CB	42.4/33.7	57			
CD	42.4/48.3	68			
DC	48.3/42.4	63			
ED	60.3/48.3	74			

101F

Kare Kısa Tee
Square Short Tee

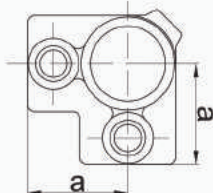
TİP	BORU ÇAPİ (mm)	EBATLAR (mm.)			
		a	b	c	d
D	48.3	62.5	68	52	

104

Uzun Tee
Long Tee

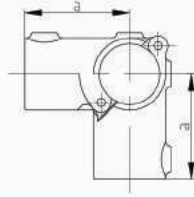
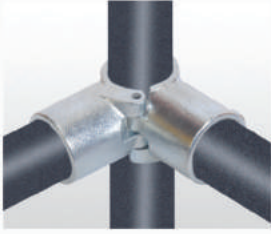
TİP	BORU ÇAPİ (mm)	EBATLAR (mm.)			
		a	b	c	d
S	17.2	30	60		
A	26.9	41	82		
B	33.7	46	92		
C	42.4	60	120		
D	48.3	68	136		
E	60.3	84	168		

116

Üç Geçişli
3 Way Through

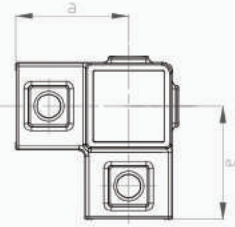
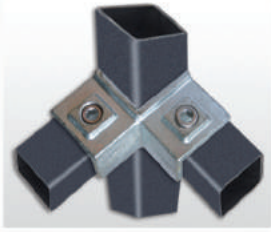
TİP	BORU ÇAPİ (mm)	EBATLAR (mm.)			
		a	b	c	d
S	17.2	30			
T	21.3	35			
A	26.9	40			
B	33.7	48			
C	42.4	60			
D	48.3	68			
E	60.3	86			

116A

Eklenli Üç Geçişli
Add-on 3 Way Through

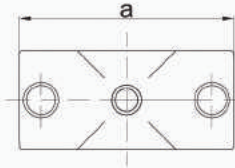
TİP	BORU ÇAPİ (mm)	EBATLAR (mm.)			
		a	b	c	d
D	48.3	88			

116F

Kare Üç Geçişli
Square 3 Way Through

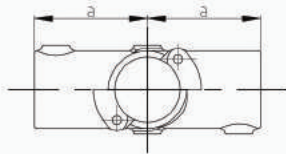
TİP	BORU ÇAPİ (mm)	EBATLAR (mm.)			
		a	b	c	d
D	48.3	68			

119

Dört Geçişli
2 Socket Cross

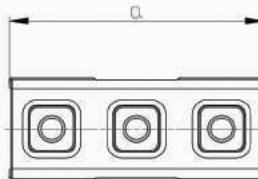
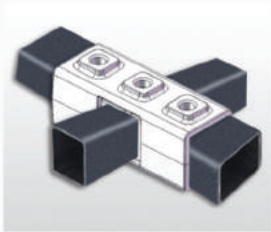
TİP	BORU ÇAPİ (mm)	EBATLAR (mm.)			
		a	b	c	d
T	21.3	70			
A	26.9	80			
B	33.7	96			
C	42.4	120			
CD	42.4/48.3	122			
D	48.3	135			
E	60.3	168			

119A

Eklenli Dört Geçişli
Add on 2 Socket Cross

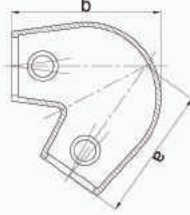
TİP	BORU ÇAPİ (mm)	EBATLAR (mm.)			
		a	b	c	d
D	48.3	88			

119F

Kare Dört Geçişli
Square 2 Socket Cross

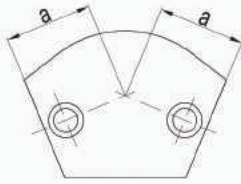
TİP	BORU ÇAPİ (mm)	EBATLAR (mm.)			
		a	b	c	d
D	48.3	135			

123

Dirsek 70°
Variable Elbow 40° - 70°

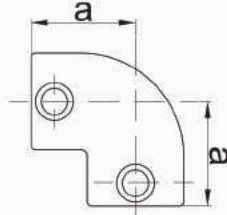
TİP	BORU ÇAPİ (mm)	EBATLAR (mm.)			
		a	b	c	d
D	48.3	120	134		

124

Dirsek 60°
Variable Elbow 15° - 60°

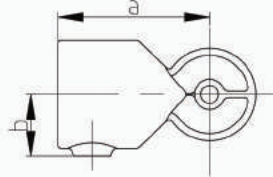
TİP	BORU ÇAPİ (mm)	EBATLAR (mm.)			
		a	b	c	d
B	33.7	40			
C	42.4	47.5			
D	48.3	44			

125

Dirsek 90°
2 Way 90° Elbow

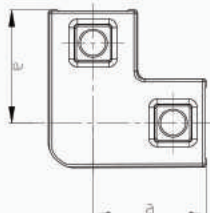
TİP	BORU ÇAPİ (mm)	EBATLAR (mm.)			
		a	b	c	d
S	17.2	30			
T	21.3	35			
A	26.9	41			
B	33.7	46			
C	42.4	60			
D	48.3	68			
DC	48.3/42.4	68/60			
E	60.3	84			

125H

Ayarlanabilir Dirsek
Variable Elbow

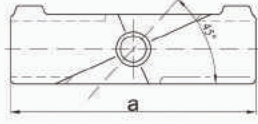
TİP	BORU ÇAPİ (mm)	EBATLAR (mm.)			
		a	b	c	d
B	33.7	62	27.2		
C	42.4	75	31.7		
D	48.3	85	34.7		

125F

Kare Çift Yönlü Dirsek 90°
Square 90° Two Way Elbow

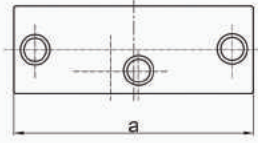
TİP	BORU ÇAPİ (mm)	EBATLAR (mm.)			
		a	b	c	d
D	48.3	68			

126

Çapraz Dört Geçişli
Angle Cross 30° - 45°

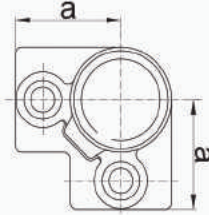
TİP	BORU ÇAPİ (mm)	EBATLAR (mm.)			
		a	b	c	d
C	42.4	190			
D	48.3	218			

127

Sabit Açılı Uzun Te
Angle Tee 30° - 45°

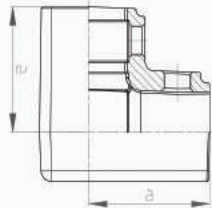
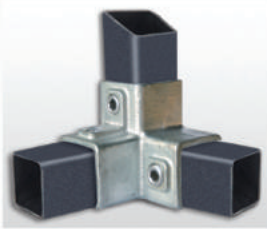
TİP	BORU ÇAPİ (mm)	EBATLAR (mm.)			
		a	b	c	d
B	33.7	119			
C	42.4	147			
D	48.3	164.5			

128

Üç Geçişli Köşe
3 Way 90° Elbow

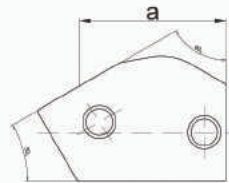
TİP	BORU ÇAPİ (mm)	EBATLAR (mm.)			
		a	b	c	d
S	17.2	30			
T	21.3	35			
A	26.9	40			
B	33.7	48			
C	42.4	60			
D	48.3	68			
E	60.3	85			

128F

Kare Üç Geçişli Köşe
Square 90° Three Way Elbow

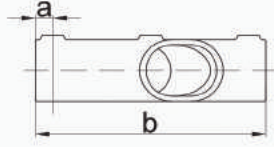
TİP	BORU ÇAPİ (mm)	EBATLAR (mm.)			
		a	b	c	d
D	48.3	67			

129

Sabit Açılı Kısa Te
Adjustable Tee 30° - 60°

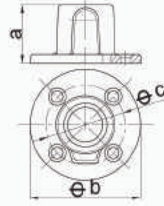
TİP	BORU ÇAPİ (mm)	EBATLAR (mm.)			
		a	b	c	d
A	26.9	75			
B	33.7	70			
C	42.4	85			
D	48.3	90			

130

Sabit Açılı Uzun Te
Adjustable Corss 30° - 45°

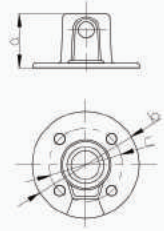
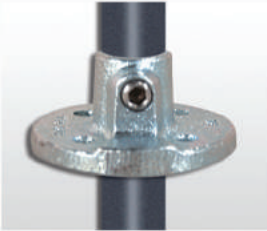
TİP	BORU ÇAPİ (mm)	EBATLAR (mm.)			
		a	b	c	d
B	33.7	14.5	147		
C	42.4	16.5	199		
D	48.3	16.5	217		

131

Zemin Flanşı
Base Flange

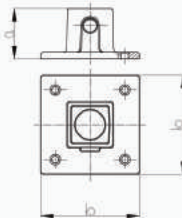
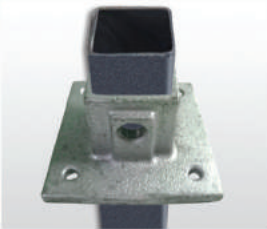
TİP	BORU ÇAPİ (mm)	EBATLAR (mm.)			
		a	b	c	d
T	21.3	32	74	55.5	
A	26.9	42	83	57	
B	33.7	48	89	65	
C	42.4	50	102	76	
D	48.3	59	114	88.5	
E	60.3	64	127	95	

131T

Delikli Zemin Flanşı
Base Flange With Hole

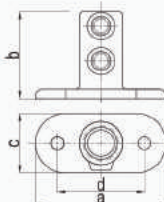
TİP	BORU ÇAPİ (mm)	EBATLAR (mm.)			
		a	b	c	d
T	21.3	32	74	55.5	
A	26.9	42	83	57	
B	33.7	48	89	65	
C	42.4	50	102	76	
D	48.3	59	114	88.5	
E	60.3	64	127	95	

131F

Kare Zemin Flanşı
Square Base Flange

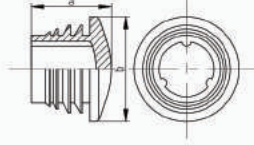
TİP	BORU ÇAPİ (mm)	EBATLAR (mm.)			
		a	b	c	d
D	48.3	116	82	42	8

132

Uzun Flanşı
Railing Base Flange

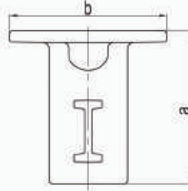
TİP	BORU ÇAPİ (mm)	EBATLAR (mm.)			
		a	b	c	d
A	26.9	105	60	52	76
B	33.7	127	71	62	89
C	42.4	139	84	72	101
D	48.3	152	89	86	114
E	60.3	165	104	96	127

133

Plastik Tapa
Plastic End Cap

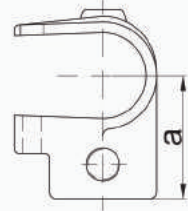
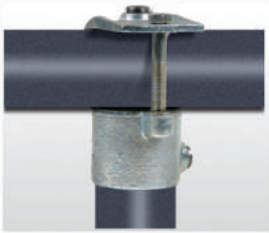
TİP	BORU ÇAPİ (mm)	EBATLAR (mm.)			
		a	b	c	d
B	33.7	26	34		
C	42.4	30	42.5		
D	48.3	31	48		
E	60.3	26	60		

134

Zeminalti Soketi
Ground Socket

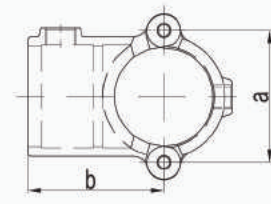
TİP	BORU ÇAPİ (mm)	EBATLAR (mm.)			
		a	b	c	d
A		105	105		
B	33.7	123	127		
C	42.4	136	140		
D	48.3	136	140		

135

Sabitleyicili Te
Clamp on Tee

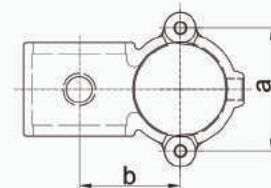
TİP	BORU ÇAPİ (mm)	EBATLAR (mm.)			
		a	b	c	d
A	26.9	50			
B	33.7	53			
C	42.4	67			
D	48.3	77			
E	60.3	90.5			

136

Eklentili Te
Add on Tee

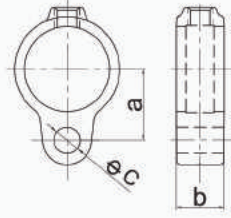
TİP	BORU ÇAPİ (mm)	EBATLAR (mm.)			
		a	b	c	d
B	33.7	53.5	52		
C	42.4	61.4	60		
D	48.3	67	69		

137

Çapraz Geçişli
Crossover 90°

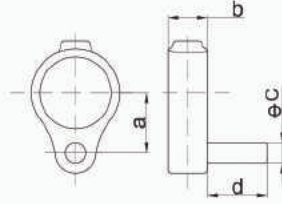
TİP	BORU ÇAPİ (mm)	EBATLAR (mm.)			
		a	b	c	d
B	33.7	53.5	41		
C	42.4	61.4	50		
D	48.3	67	55		

138

Delikli Sabitleyici
Gate Eye

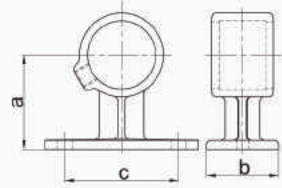
TİP	BORU ÇAPİ (mm)	EBATLAR (mm.)			
		a	b	c	d
A	26.9	30	25	14	
B	33.7	33	25	14	
C	42.4	38	25	14	
D	48.3	41	25	14	

140

Menteşeli Sabitleyici
Gate Hinge

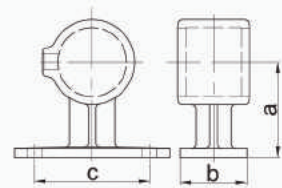
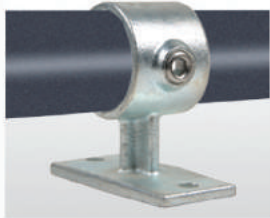
TİP	BORU ÇAPİ (mm)	EBATLAR (mm.)			
		a	b	c	d
A	26.9	30	25	13	38
B	33.7	33	25	13	38
C	42.4	38	25	12	38
D	48.3	41	25	12	38

143

Kare Flanşlı
Handrail Bracket

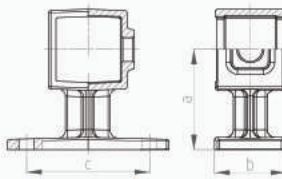
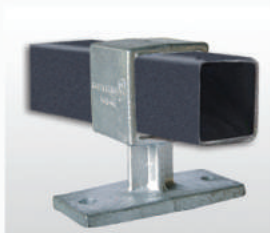
TİP	BORU ÇAPİ (mm)	EBATLAR (mm.)			
		a	b	c	d
S	17.2	39	32	45	
A	26.9	55	44	57	
B	33.7	57	44	62	
C	42.4	63	44	76	
D	48.3	67	50	82.5	

143W

Kare Flanşlı
Handrail Bracket

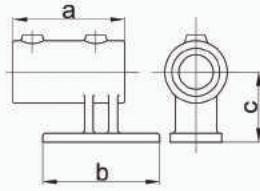
TİP	BORU ÇAPİ (mm)	EBATLAR (mm.)			
		a	b	c	d
A	26.9	55	44	57.5	
B	33.7	57	44	63	
C	42.4	63	44	76	
D	48.3	67	48	82.5	

143FW

Kare Flanşlı
Square Hand Rail Bracket

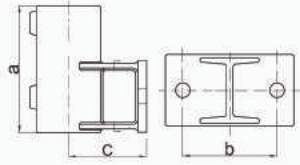
TİP	BORU ÇAPİ (mm)	EBATLAR (mm.)			
		a	b	c	d
D	48.3	67	48	82.5	

144

Duvara Kare Flanşlı
Railing Side Support (Vertical)

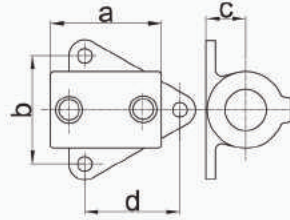
TİP	BORU ÇAPİ (mm)	EBATLAR (mm.)			
		a	b	c	d
B	33.7	104	96	65	
C	42.4	112	110	64.5	
D	48.3	120	123	65	

145

Duvara Kare Flanşlı
Railing Side Support (Horizontal)

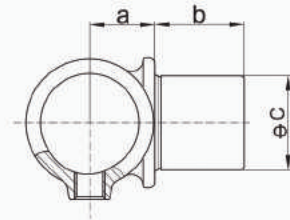
TİP	BORU ÇAPİ (mm)	EBATLAR (mm.)			
		a	b	c	d
B	33.7	102	67	57	
C	42.4	111	73	64	
D	48.3	119	89	73	

146

Duvara Üçgen Flanşlı
Side Palm Fixing

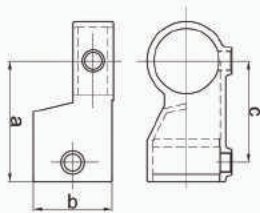
TİP	BORU ÇAPİ (mm)	EBATLAR (mm.)			
		a	b	c	d
B	33.7	76	71	24	63
C	42.4	83	82	28	72
D	48.3	89	86	31	78

147

İç Döner Te
Internal Swivel Tee

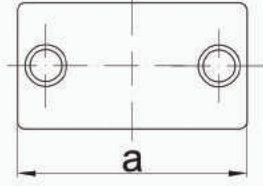
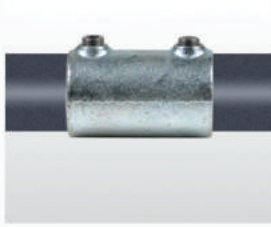
TİP	BORU ÇAPİ (mm)	EBATLAR (mm.)			
		a	b	c	d
B	33.7	23	29	34	
C	42.4	26	37	42	
D	48.3	30	42	48	

148

Kısa Döner Te
Short Swivel Tee

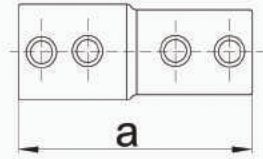
TİP	BORU ÇAPİ (mm)	EBATLAR (mm.)			
		a	b	c	d
A	26.9	53	37	42	
B	33.7	59	46	48	
C	42.4	73	55	58.5	
D	48.3	93	60.5	78	
E	60.3	110	73	93.5	

149

Bağlantı Parçası
Sleeve Joint

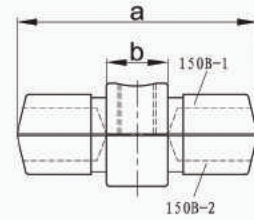
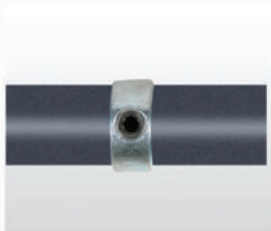
TİP	BORU ÇAPı (mm)	EBATLAR (mm.)			
		a	b	c	d
S	17.2	60			
A	26.9	76			
B	33.7	89			
C	42.4	102			
D	48.3	102			
E	60.3	120			

149BA

Redüksiyon Bağlantı Parçası
Reducing Sleeve Joint

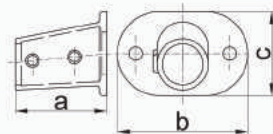
TİP	BORU ÇAPı (mm)	EBATLAR (mm.)			
		a	b	c	d
BA	33.7/26.9	130			

150

Kısa Bağlantı Parçası
Internal Joint

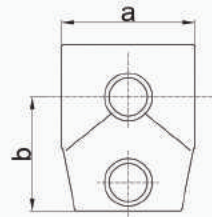
TİP	BORU ÇAPı (mm)	EBATLAR (mm.)			
		a	b	c	d
A	26.9	76	22		
B	33.7	78	20		
C	42.4	78	20		
D	48.3	78	20		

152

Zemin Flanşlı
Base Flange 0° - 11°

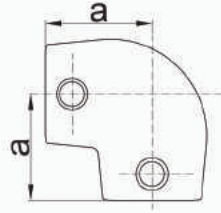
TİP	BORU ÇAPı (mm)	EBATLAR (mm.)			
		a	b	c	d
B	33.7	90	127	80	
C	42.4	98	140	90	
D	48.3	99	153	96	

153

Eğik Kısa Te 11°
Short Tee 0° - 11°

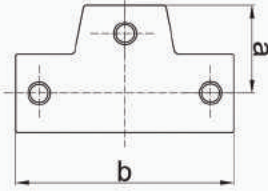
TİP	BORU ÇAPı (mm)	EBATLAR (mm.)			
		a	b	c	d
B	33.7	60	46		
C	42.4	70	60		
D	48.3	78	68		

154

Eğik Dirsek 11°
Elbow 0° - 11°

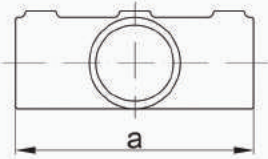
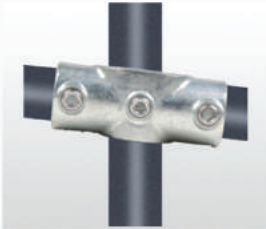
TİP	BORU ÇAPİ (mm)	EBATLAR (mm.)			
		a	b	c	d
B	33.7	46			
C	42.4	60			
D	48.3	68			

155

Eğik Uzun Te 11°
Long Tee 0° - 11°

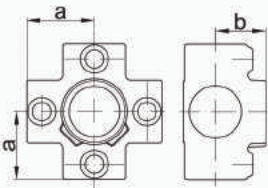
TİP	BORU ÇAPİ (mm)	EBATLAR (mm.)			
		a	b	c	d
B	33.7	46	104		
C	42.4	60	145		
D	48.3	68	168		

156

Eğik Soket 11°
2 Socket Cross 0° - 11°

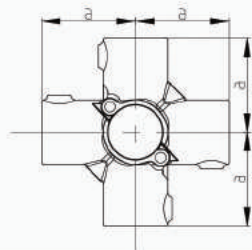
TİP	BORU ÇAPİ (mm)	EBATLAR (mm.)			
		a	b	c	d
B	33.7	110			
C	42.4	140			
D	48.3	158			

158

4 Geçişli
4 Way Cross

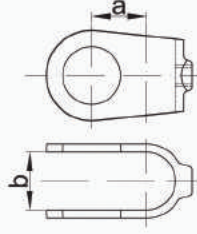
TİP	BORU ÇAPİ (mm)	EBATLAR (mm.)			
		a	b	c	d
T	21.3	35	35		
A	26.9	41	32		
B	33.7	46	35		
C	42.4	60	43.5		
D	48.3	68	49.5		

158A

4 Geçişli Eklentili
Add on 4Way Cross

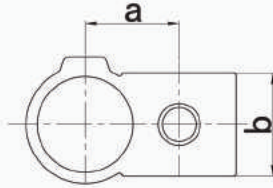
TİP	BORU ÇAPİ (mm)	EBATLAR (mm.)			
		a	b	c	d
D	48.3	88			

160

Karşı Yakalamalı
Clamp on Crossover

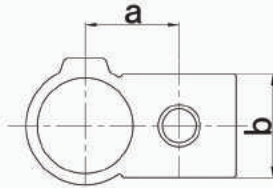
TİP	BORU ÇAPİ (mm)	EBATLAR (mm.)			
		a	b	c	d
A	26.9	27	28		
B	33.7	34	35		
C	42.4	43	45.4		
D	48.3	49	51.6		
E	60.3	61	63		

161

Karşı Yakalamalı
90° Crossover

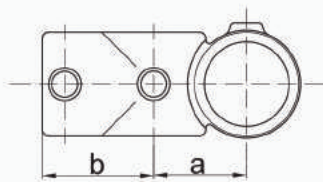
TİP	BORU ÇAPİ (mm)	EBATLAR (mm.)			
		a	b	c	d
A	26.9	38	31.5		
B	33.7	41	38.5		
C	42.4	50	45		
D	48.3	50	55		
E	60.3	64	61		

161

Redüksiyon Karşı Yakalamalı
Reducing 90° Crossover

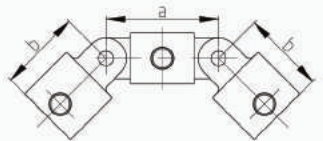
TİP	BORU ÇAPİ (mm)	EBATLAR (mm.)			
		a	b	c	d
CB	42.4/33.7	45	46		
DB	48.3/33.7	45	38.5		
DC	48.3/42.4	49	45		
ED	60.3/48.3	58	55		

165

Kombinasyon Soketi
Combination Socket

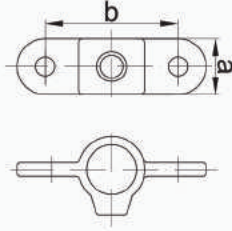
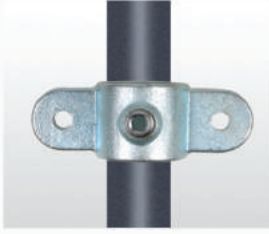
TİP	BORU ÇAPİ (mm)	EBATLAR (mm.)			
		a	b	c	d
A	26.9	35	40		
B	33.7	40	48		
C	42.4	50	60		
D	48.3	56	67		

167

Çift Taraflı Döner Kombineli
Double Swivel Combination

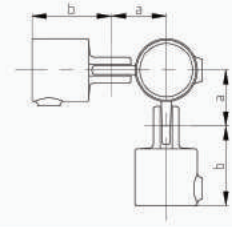
TİP	BORU ÇAPİ (mm)	EBATLAR (mm.)			
		a	b	c	d
A	26.9	76	58.5		
B	33.7	86	61		
C	42.4	95	69		
D	48.3	100	77		
E	60.3	124	90.5		

167M

Çift Taraflı Ara Sabitleyicili
Double Male Section of Swivel

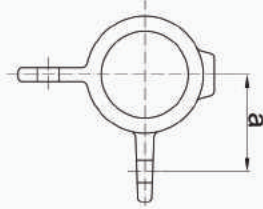
TİP	BORU ÇAPİ (mm)	EBATLAR (mm.)			
		a	b	c	d
A	26.9	32	76		
B	33.7	40	86		
C	42.4	45	95		
D	48.3	48	105		
E	60.3	38	124		

168

90° Döner Kombinasyonlu
90° Corner Swivel Combination

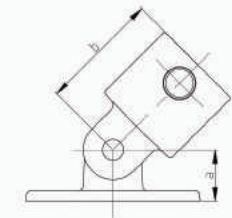
TİP	BORU ÇAPİ (mm)	EBATLAR (mm.)			
		a	b	c	d
A	26.9	38	58.5		
B	33.7	43.5	61		
C	42.4	47	69		
D	48.3	53	77		
E	60.3	62	90.5		

168M

90° Ara Sabitleyicili
90° Corner Swivel Male Section

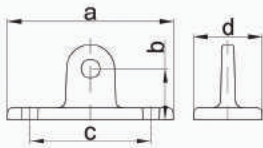
TİP	BORU ÇAPİ (mm)	EBATLAR (mm.)			
		a	b	c	d
A	26.9	38			
B	33.7	43.5			
C	42.4	48			
D	48.3	53			
E	60.3	62			

169

Döner Taban
Swivel Base

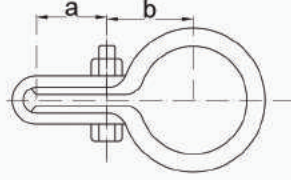
TİP	BORU ÇAPİ (mm)	EBATLAR (mm.)			
		a	b	c	d
A	26.9	32	58.5		
B	33.7	32	61		
C	42.4	32	69		
D	48.3	32	77		
E	60.3	32	95		

169M

Sabit Kare Flaş
Male Swivel Locating Flange

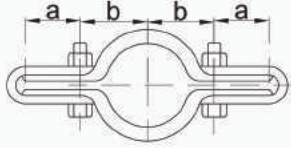
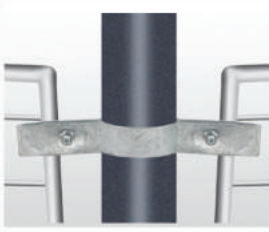
TİP	BORU ÇAPİ (mm)	EBATLAR (mm.)			
		a	b	c	d
M		112	32	85	51
A	26.9	111	40	81	46
B	33.7	112	32	85	52
C	42.4	112	32	85	52
D	48.3	112	32	85	52

170

Tek Taraflı İnce Tutucu
Single Sided Mesh Panel

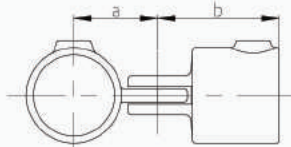
TİP	BORU ÇAPİ (mm)	EBATLAR (mm.)			
		a	b	c	d
A	26.9	22	25		
B	33.7	25	28		
C	42.4	25	33		
D	48.3	25	35		
E	60.3	25	40		

171

Çift Taraflı İnce Tutucu
Double Sided Mesh Panel

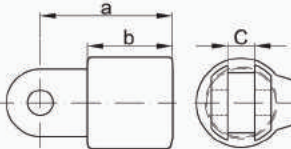
TİP	BORU ÇAPİ (mm)	EBATLAR (mm.)			
		a	b	c	d
A	26.9	22	25		
B	33.7	25	28		
C	42.4	25	33		
D	48.3	25	35		
E	60.3	25	40		

173

Tek Taraflı Döner Tutucu
Single Swivel Combination

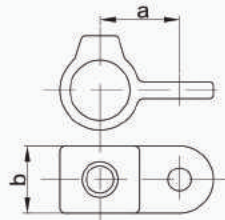
TİP	BORU ÇAPİ (mm)	EBATLAR (mm.)			
		a	b	c	d
S	17.2	26	41		
A	26.9	38	58.5		
B	33.7	43.5	61		
C	42.4	47	69		
D	48.3	53	77		
E	60.3	62	90.5		

173F

Döner Dişi Tutucu
Female Section of Swivel

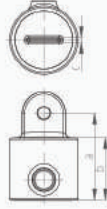
TİP	BORU ÇAPİ (mm)	EBATLAR (mm.)			
		a	b	c	d
A	26.9	61	38	11.2	
B	33.7	61	38	11.2	
C	42.4	69	46	11.2	
D	48.3	77	55	11.2	
E	60.3	90.5	63	11.2	

173M

Erkek Soket
Single Male Section of Swivel

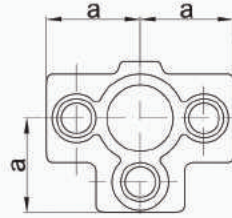
TİP	BORU ÇAPİ (mm)	EBATLAR (mm.)			
		a	b	c	d
A	26.9	40	38		
B	33.7	43.5	38		
C	42.4	48	44.5		
D	48.3	53	44.5		
E	60.3	62	50.5		

175M

Döner Dirsek
Swivel Elbow

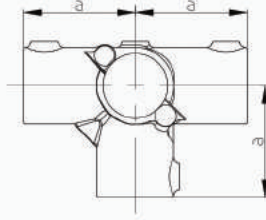
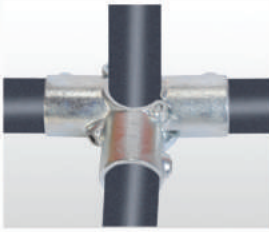
TİP	BORU ÇAPİ (mm)	EBATLAR (mm.)			
		a	b	c	d
D	48.3	77	56	4	

176

Beş Geçişli
Side Outlet Tee

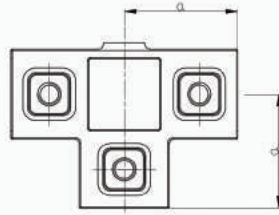
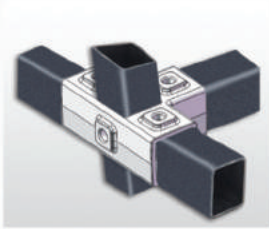
TİP	BORU ÇAPİ (mm)	EBATLAR (mm.)			
		a	b	c	d
T	21.3	35			
A	26.9	40			
B	33.7	46			
C	42.4	60			
D	48.3	68			
E	60.3	84.5			

176A

Eklenli Beş Geçişli
Add on Side Outlet Tee

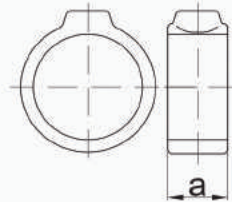
TİP	BORU ÇAPİ (mm)	EBATLAR (mm.)			
		a	b	c	d
D	48.3	88			

176F

Kare Beş Geçişli
Square Side Outlet Tee

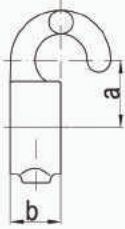
TİP	BORU ÇAPİ (mm)	EBATLAR (mm.)			
		a	b	c	d
D	48.3	68			

179

Kilitleme Bileziği
Locking Collar

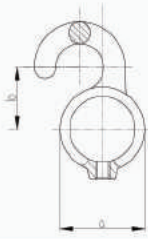
TİP	BORU ÇAPİ (mm)	EBATLAR (mm.)			
		a	b	c	d
A	26.9	22			
B	33.7	25			
C	42.4	25			
D	48.3	32			

182

Kanca
Hook

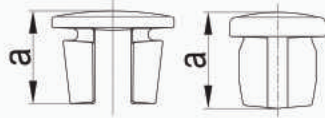
TİP	BORU ÇAPİ (mm)	EBATLAR (mm.)			
		a	b	c	d
S	17.2	22.5	25		
A	26.9	32	25		
B	33.7	34	25		
C	42.4	39	25		
D	48.3	41	25		

182T

Yatay Kanca
Horizontal Hook

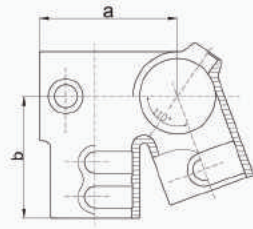
TİP	BORU ÇAPİ (mm)	EBATLAR (mm.)			
		a	b	c	d
A	26.9		32		
B	33.7		34		
C	42.4		39		
D	48.3		41		

184

Metal Tapa
Plug

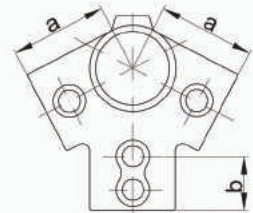
TİP	BORU ÇAPİ (mm)	EBATLAR (mm.)			
		a	b	c	d
S		17.2			
A	26.9	27.5			
B	33.7	26.5			
C	42.4	29.4			
D	48.3	28			
E	60.3	38			

185

Çok Yönlü Tutucu
Eaves Fitting

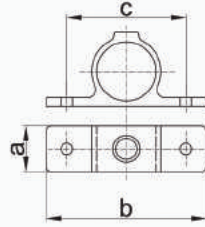
TİP	BORU ÇAPİ (mm)	EBATLAR (mm.)			
		a	b	c	d
A		55	60		
C		82	80		
D	48.3	94	83		

191

Sabit Açılı Beş Geçişli
Ridge Fitting

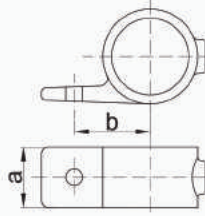
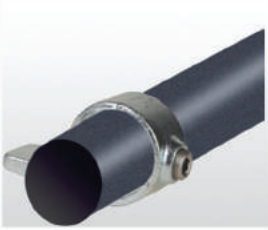
TİP	BORU ÇAPİ (mm)	EBATLAR (mm.)			
		a	b	c	d
A		52	30		
C		72	36		
D	48.3	70	39.5		

198

Çift Taraflı Sabitleme Parçası
Double Sided Fixing Bracket

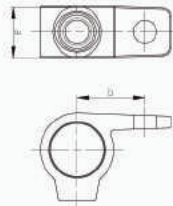
TİP	BORU ÇAPI (mm)	EBATLAR (mm.)			
		a	b	c	d
S	17.2	18	65	47	
A	26.9	35	128	94	
B	33.7	30	120	86	
C	42.4	33	130	95	
D	48.3	35	140	104	

199

Ayarlanabilir Sabitleme Parçası
Adjustable Fixing Bracket

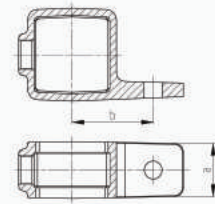
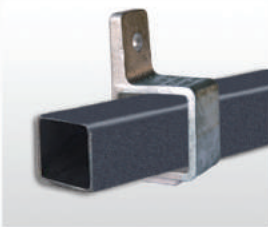
TİP	BORU ÇAPI (mm)	EBATLAR (mm.)			
		a	b	c	d
B	33.7	30	43		
C	42.4	33	47.5		
D	48.3	35	52		

199

Ayarlanabilir Sabitleme Parçası
Adjustable Fixing Bracket

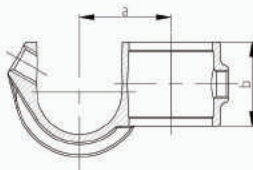
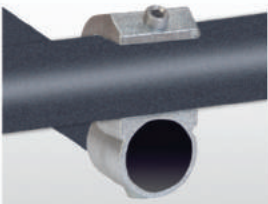
TİP	BORU ÇAPI (mm)	EBATLAR (mm.)			
		a	b	c	d
S	17.2	18	23.5		
A	26.9	35	47		

199F

Ayarlanabilir Kare Sabitleme Parçası
Square Adjustable Fixing Bracket

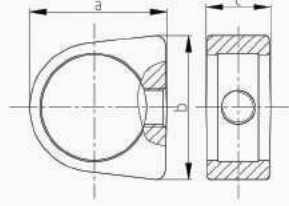
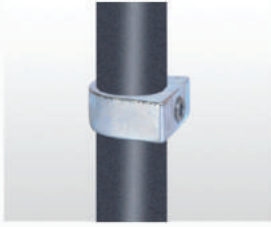
TİP	BORU ÇAPI (mm)	EBATLAR (mm.)			
		a	b	c	d
D	48.3	30.9	47.5		

201

Güvenlik Kancası
Guard Hook

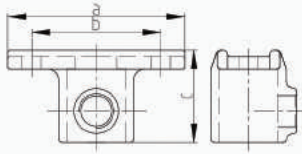
TİP	BORU ÇAPI (mm)	EBATLAR (mm.)			
		a	b	c	d
D	48.3	55.3	51.5		

235

Güvenlik Kancası
Rely Ring

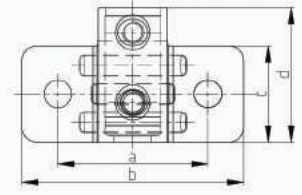
TİP	BORU ÇAPI (mm)	EBATLAR (mm.)			
		a	b	c	d
C	42.4	58.5	62.6	27.5	

240

Ağır Hizmet Tipi Avuç İçi Flanşlı
Heavt Duty Flange Palm

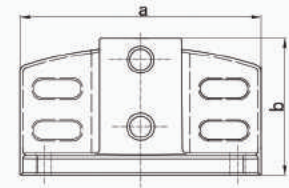
TİP	BORU ÇAPI (mm)	EBATLAR (mm.)			
		a	b	c	d
20X85	26.9	85	62	44	
20X110	26.9	110	85	44	
20X165	26.9	165	140	44	

246

Çift Taraflı Kare Sabitleme Parçası
Heavt Duty Side Palm

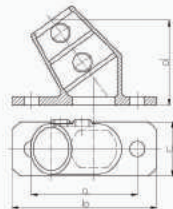
TİP	BORU ÇAPI (mm)	EBATLAR (mm.)			
		a	b	c	d
B	33.7	100.5	148	64	90
C	42.4	100.5	148	64	90
D	48.3	102	145	75	90

247

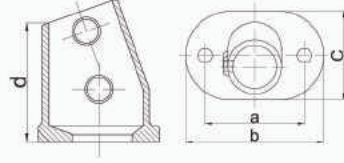
Adaptörlü Flanş
Flange With Toeboard Adaptor

TİP	BORU ÇAPI (mm)	EBATLAR (mm.)			
		a	b	c	d
C	42.4	162	90		
D	48.3	162	90		

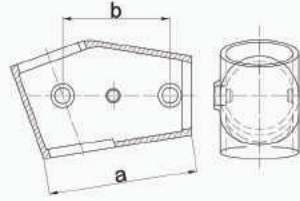
252

Eğimli Zemin Flanşı
Slope Base Flange

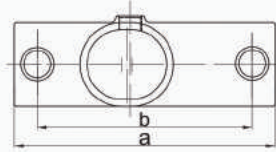
TİP	BORU ÇAPI (mm)	EBATLAR (mm.)			
		a	b	c	d
D	48.3	126	172	65	101

252Z**Sabit Açılı Yer Flanşlı 11°-29°**
Slope Base Flange 11° - 29°

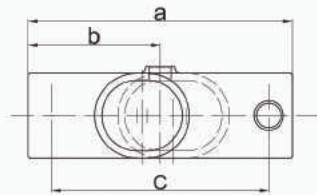
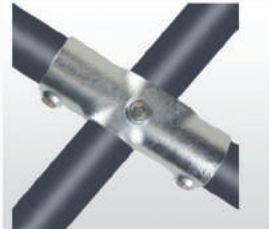
TİP	BORU ÇAPI (mm)	EBATLAR (mm.)			
		a	b	c	d
D	48.3	127	165	92	88

253Z**Sabit Açılı Kısa Te 11°-29°**
Slope Short Tee 11° - 29°

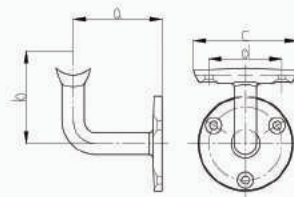
TİP	BORU ÇAPI (mm)	EBATLAR (mm.)			
		a	b	c	d
D	48.3	115	86		

255Z**Sabit Açılı Uzun Te 11°-29°**
Slope Long Tee 11° - 29°

TİP	BORU ÇAPI (mm)	EBATLAR (mm.)			
		a	b	c	d
D	48.3	187	154		

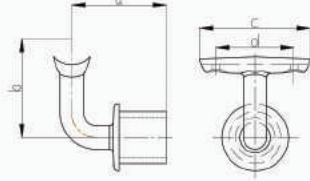
256Z**Sabit Açılı Dört Geçişli 11°-29°**
Slope Cross Middle Rail 11° - 29°

TİP	BORU ÇAPI (mm)	EBATLAR (mm.)			
		a	b	c	d
D	48.3	187	93.5	154	

746**Duvar Braketi**
Assist Rivet - Wall Bracket

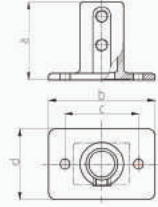
TİP	BORU ÇAPI (mm)	EBATLAR (mm.)			
		a	b	c	d
C	42.4	76.5	80	90	63

748

Bağlayıcı
Post Connector

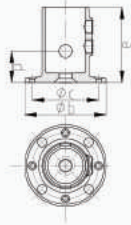
TİP	BORU ÇAPİ (mm)	EBATLAR (mm.)			
		a	b	c	d
C	42.4	76.5	80	90	63

KF393

Kare Korkuluk Taban Flanşı
Square Railing Base Flange

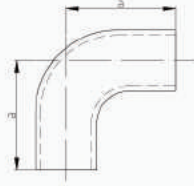
TİP	BORU ÇAPİ (mm)	EBATLAR (mm.)			
		a	b	c	d
C	42.4	110	150	104	100

T132

Yuvarlak Korkuluk Taban Flanşı
Round Railing Base Flange

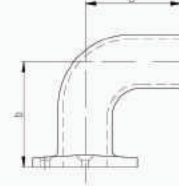
TİP	BORU ÇAPİ (mm)	EBATLAR (mm.)			
		a	b	c	d
D	48.3	96	104	81.2	40

DDA-1

Dirsek
Elbow

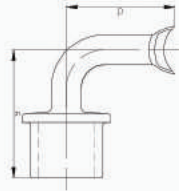
TİP	BORU ÇAPI (mm)	EBATLAR (mm.)			
		a	b	c	d
1	33.7	78.2			

DDA-2

Flanşlı Dirsek
End Plate

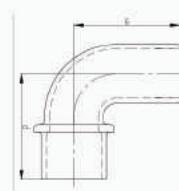
TİP	BORU ÇAPI (mm)	EBATLAR (mm.)			
		a	b	c	d
2	33.7	78.2	86.2		

DDA-3

Flanşlı Destek
Post Connector

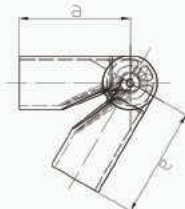
TİP	BORU ÇAPI (mm)	EBATLAR (mm.)			
		a	b	c	d
3		85	70		

DDA-4

Gömmeli Dirsek
Post End Connector

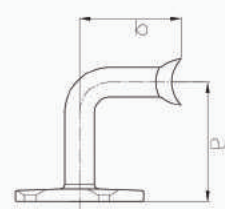
TİP	BORU ÇAPI (mm)	EBATLAR (mm.)			
		a	b	c	d
4	33.7	78			

DDA-5

Değişken Dirsek
Variable Elbow

TİP	BORU ÇAPI (mm)	EBATLAR (mm.)			
		a	b	c	d
5	42.4	88			

DDA-6

Duvar Desteği
Wall Plate

TİP	BORU ÇAPI (mm)	EBATLAR (mm.)			
		a	b	c	d
6		95	70		

Bu katalogta verilen bilgilerin doğruluğundan emin olmak için her türlü özen gösterilmiş olmasına rağmen, gerekli görüldüğü şekilde ve bu bilgileri değiştirme ve gözden geçirme hakkını saklı tutuyoruz.

SERTIFIKALAR

